



FUTURE FINGAL:  
FINGAL  
*Skills* STRATEGY  
IDEAS • COLLABORATION • ACTION

Comhairle Contae  
Fhine Gall  
Fingal County  
Council

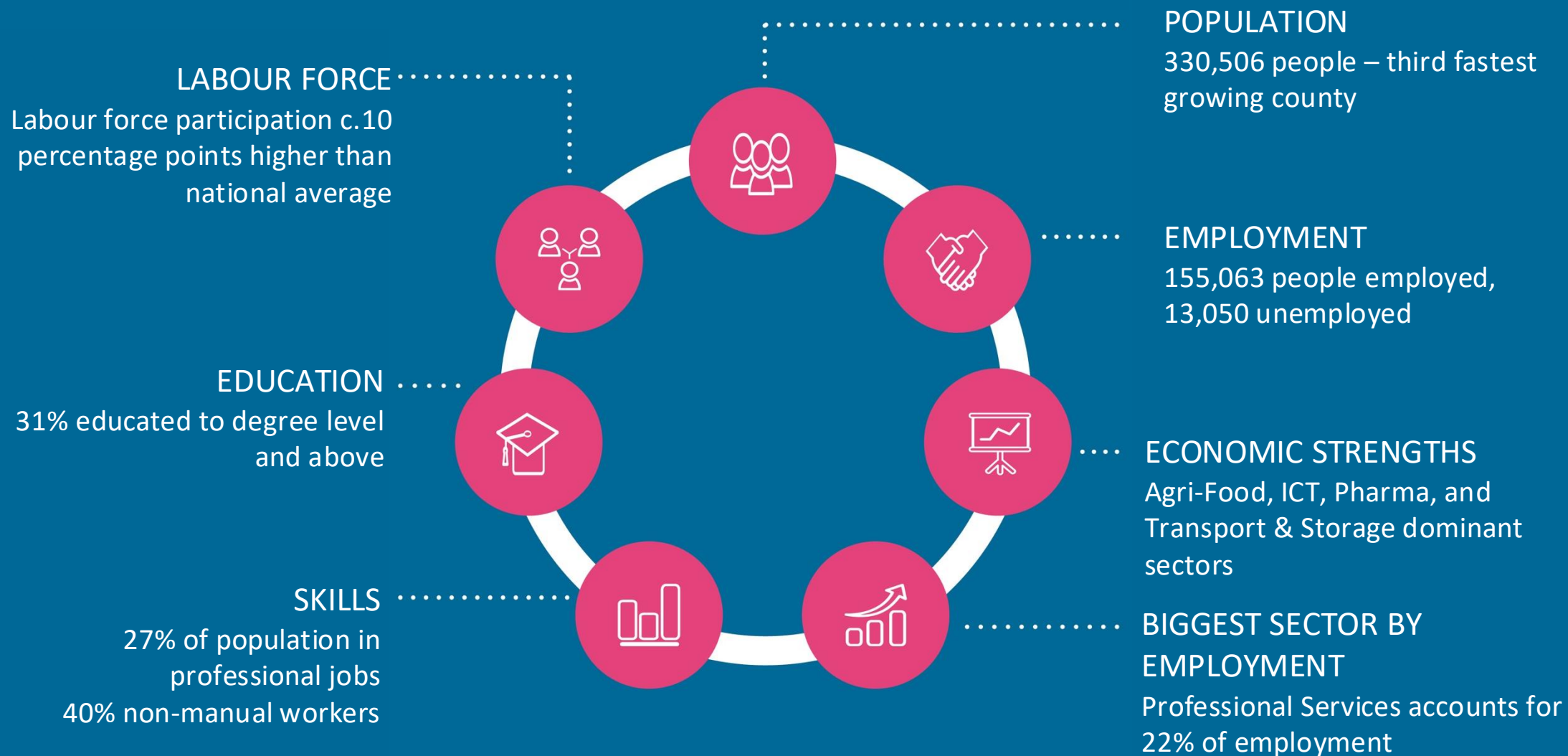


# Future Fingal: Fingal Skills Strategy Ideas • Collaboration • Action

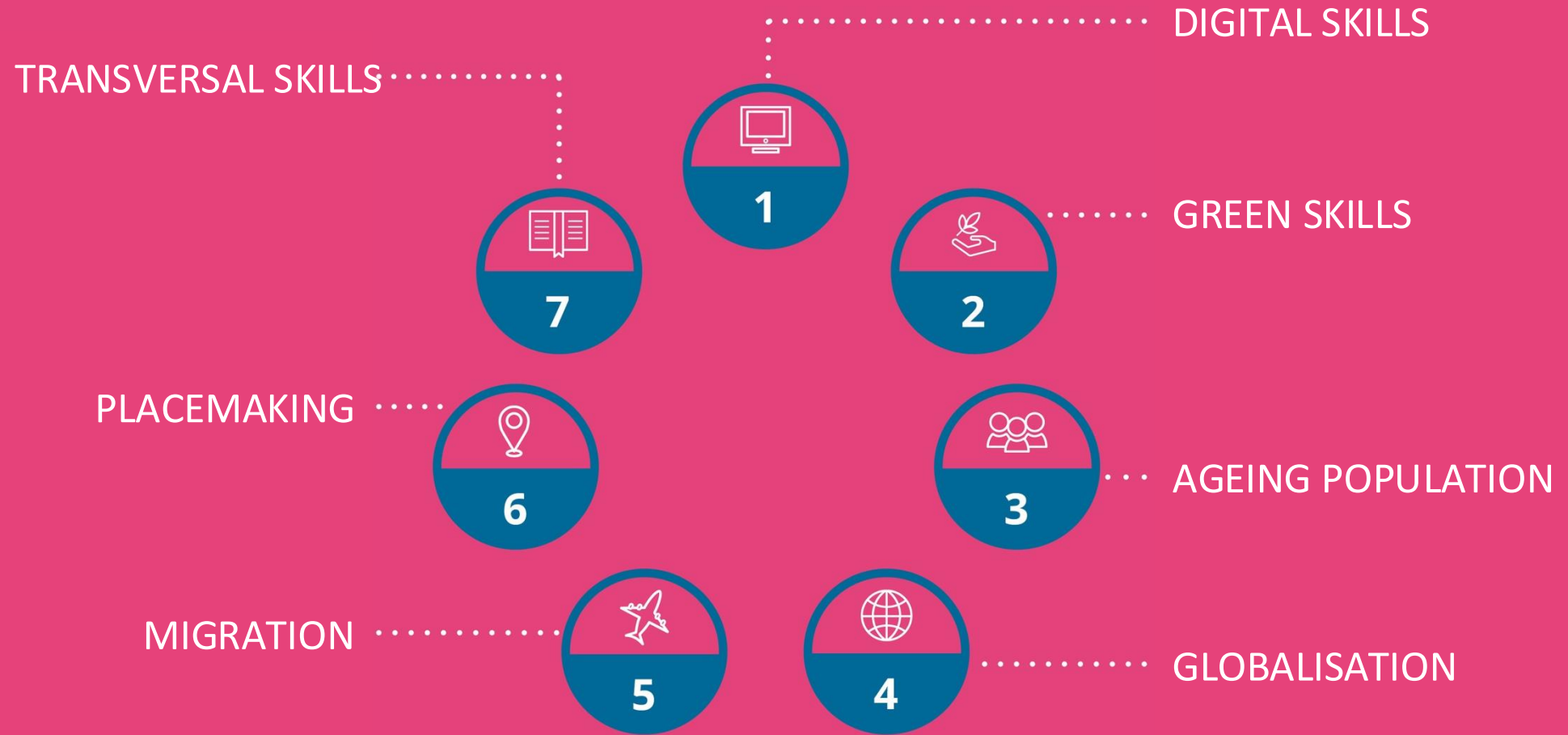
Aoife Sheridan  
Fingal County Council  
June 2025



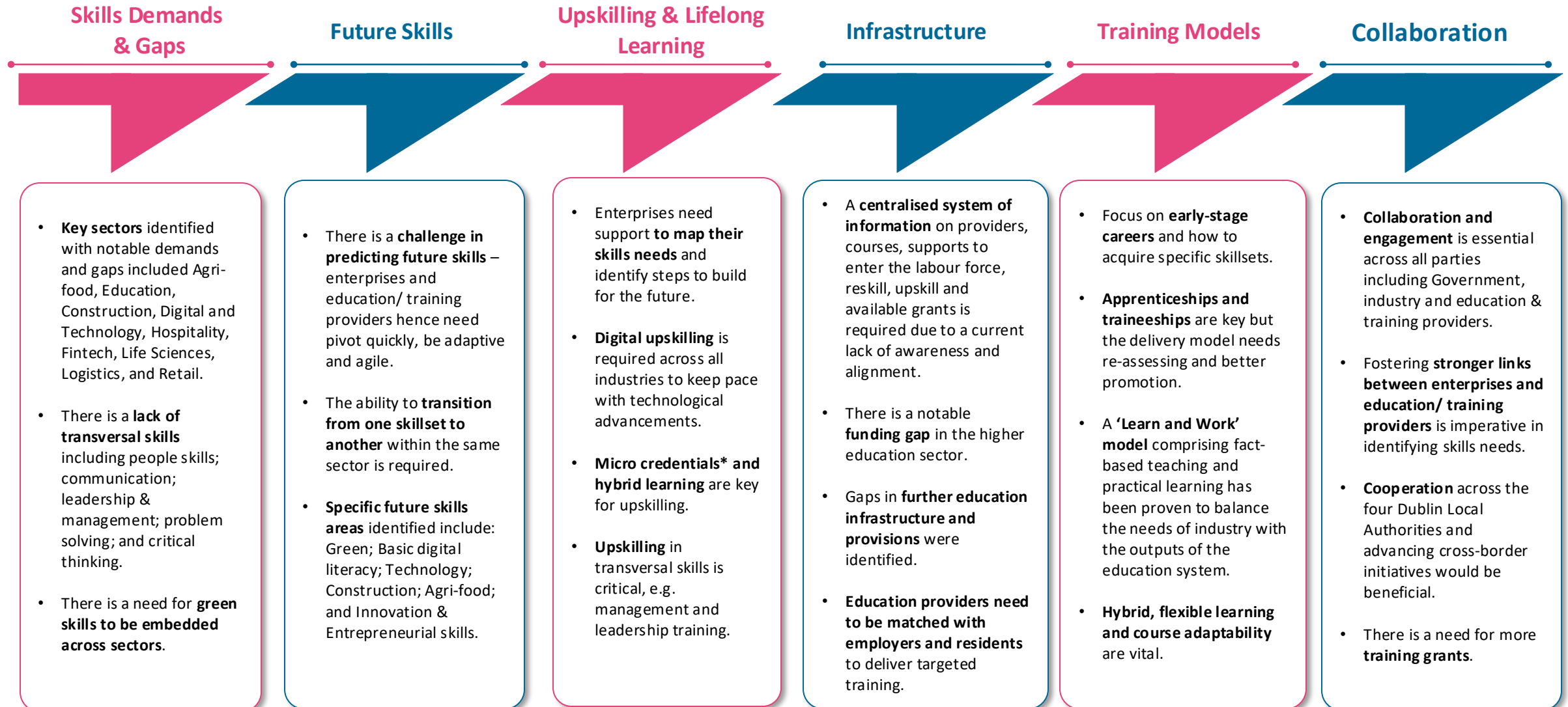
# Fingal's Skills Landscape



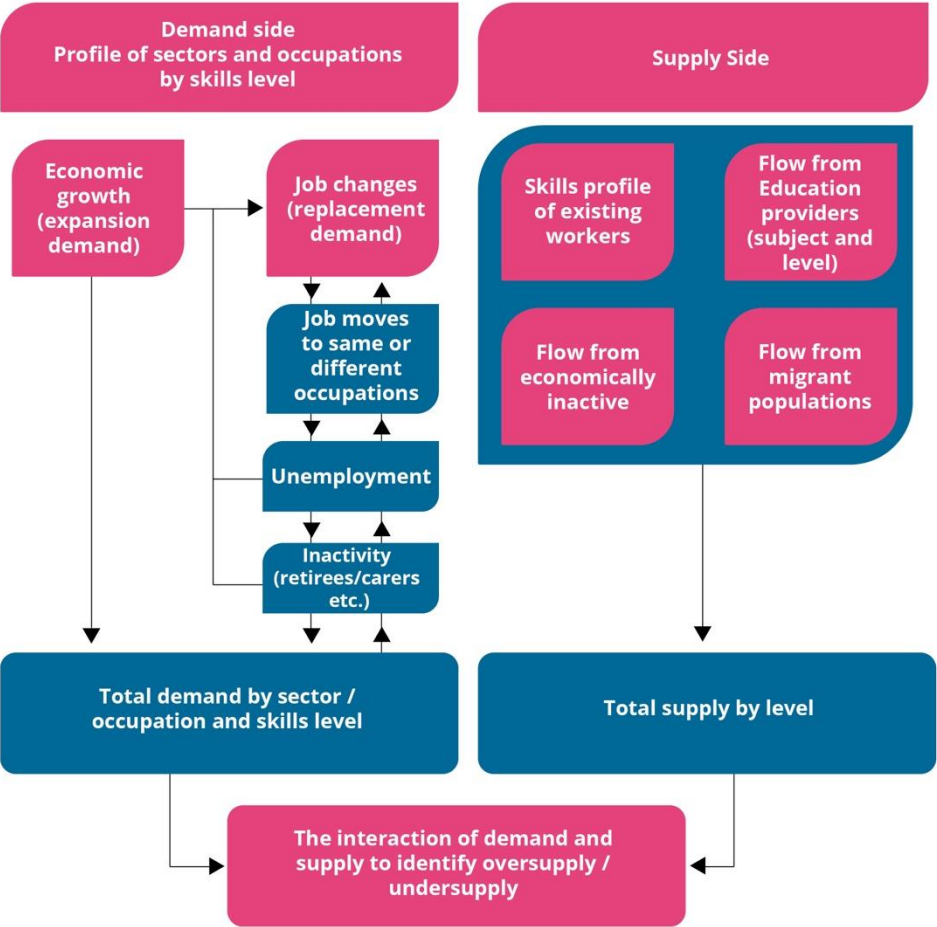
# Megatrends



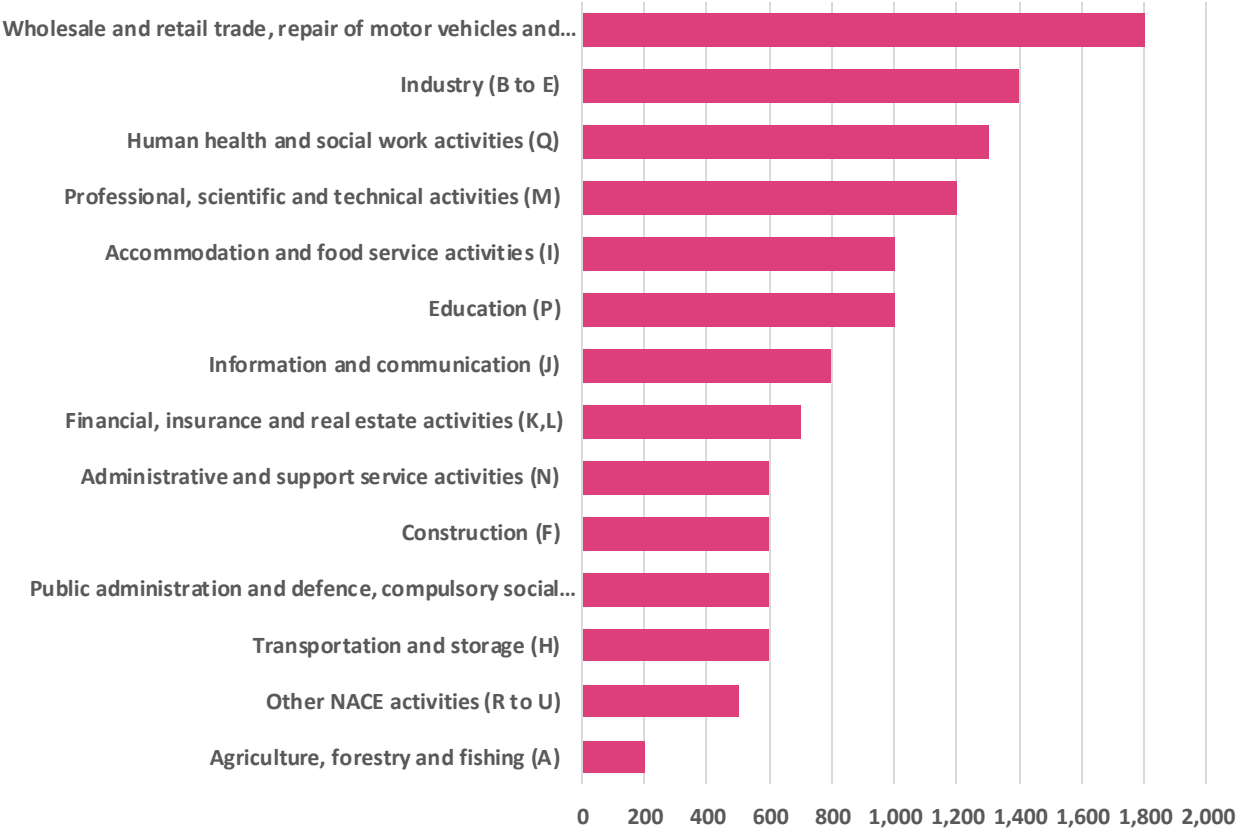
# Key Findings



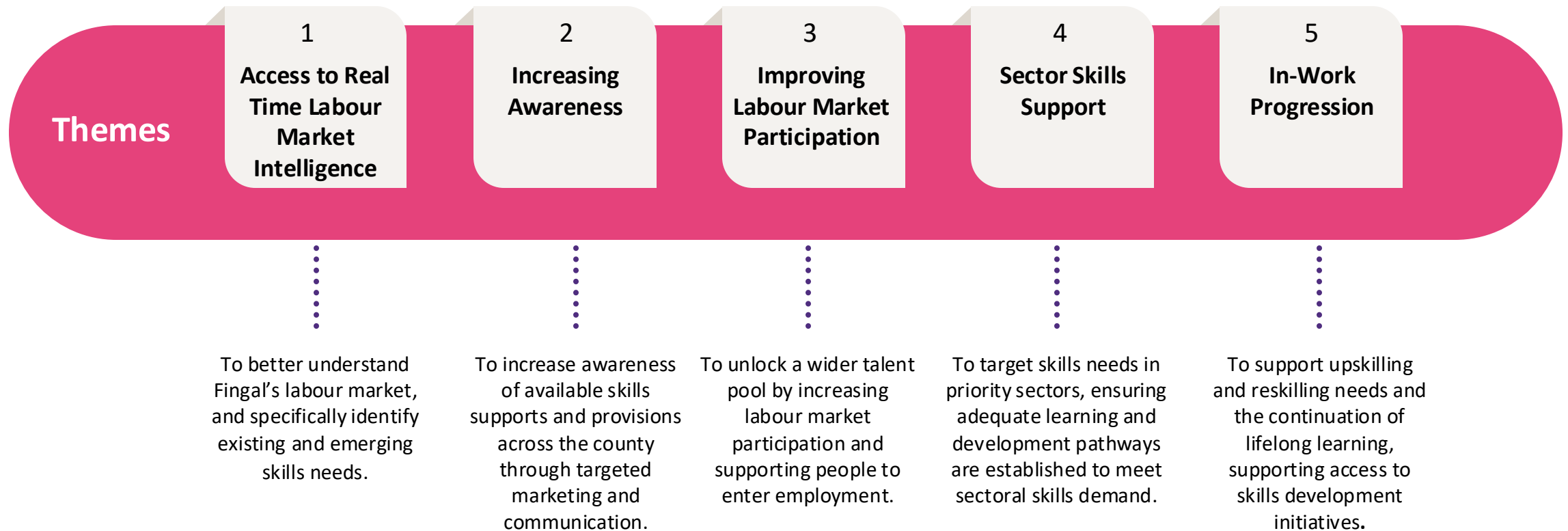
# Fingal's Skills Landscape



Annual Net Requirement by Sector (2024-2029)



# Fingal's Roadmap to Growing its Skills Profile





# Improving Labour Market Participation

03

## Improving labour market participation

To unlock a wider talent pool by increasing labour market participation and supporting people to enter employment.

- **Reducing barriers to employment**  
Identify and address barriers such as childcare, transport, accessibility to improve workforce participation
- **Targeted Upskilling Programmes**  
Training for under-represented groups
- **Community-based training**  
Partnerships with local organisations to deliver training to disadvantaged communities
- **Flexible Learning Pathways**  
Expanding provision for online, modular, part-time options to cater for diverse needs
- **Employer Engagement**  
Encouraging inclusive hiring practices & supporting workplace diversity



# SME's in Ireland – 99.8%

Business Type	% of Total Enterprises
Micro-enterprise (< 10 employees)	92.6 %
Small enterprise (10 – 49 employees)	6.1%
Medium enterprise (50 – 249 employees)	1.1 %
Large enterprise (250+ employees)	0.2 %



# SME Green Transition

05

In-work progression

To support upskilling and reskilling needs and the continuation of lifelong learning, supporting access to skills development initiatives.

- **Green Skills Development**  
Provide focused support to SME's to upskill in sustainability, energy efficiency & circular economy with provision of flexible, tailored online courses, promote awareness of funded provision, encourage upskilling to promote staff retention & examine pilot SME training fund
- **Embed Culture of Life-long Learning**  
Embed culture with employers & employees & develop flexible up-skilling & re-skilling programmes
- **Embed digital & green skills**  
Support future skills development by embedding digital, green & transversal skills in education/training provision

# FUTURE FINGAL: FINGAL SKILLS STRATEGY 2024 – 2029

Comhairle Contae  
Fhine Gall  
Fingal County  
Council



FUTURE FINGAL:  
FINGAL  
*Skills* STRATEGY  
IDEAS COLLABORATION ACTION

Comhairle Contae  
Fhine Gall  
Fingal County  
Council



## Scan to download:





**LinkedIn:** [www.linkedin.com/company/fcc-economic-development/](https://www.linkedin.com/company/fcc-economic-development/)



**X:** [@FCC\\_Econ\\_Dev](https://twitter.com/FCC_Econ_Dev)



**Facebook:** [www.facebook.com/FCCEconomicDevelopment](https://www.facebook.com/FCCEconomicDevelopment)