



## **EARLALL: the European Association of Regional and Local Authorities for Lifelong Learning**

# Who are we?



EARLALL believes that **regions and local** authorities have a privileged role in **designing and implementing strategies for lifelong learning** since they are in direct contact with **citizens, educational institutions** and the **business environment**.



The network was established in **2001** and its secretariat is based in Brussels, Belgium. The **Presidency is held by the Region Västra Götaland (Sweden)**.



# Our Network



Presidency held by the  
Region Västra  
Götaland, with 5 board  
members



12 regions  
7 associate  
members



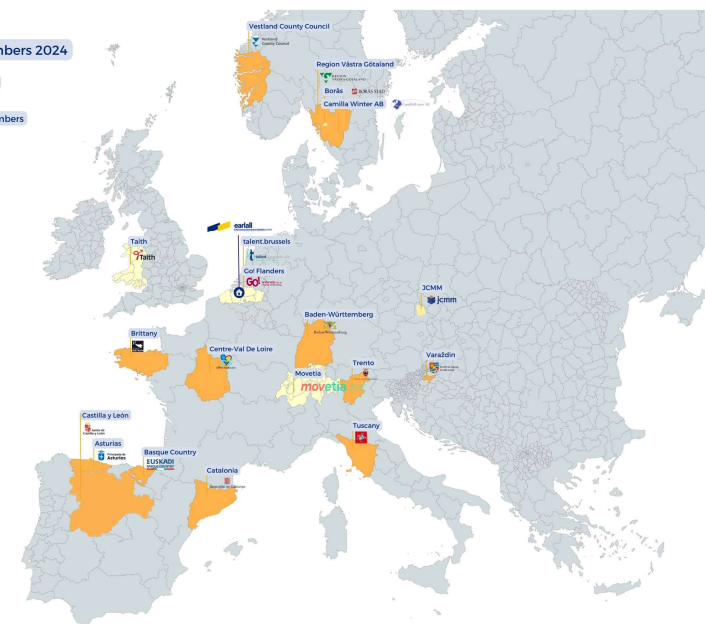
11  
Countries



40+ million  
inhabitants

EARLALL Members 2024

Full Members  
Associate Members



# Our Mission

- The association aims to facilitate **collaboration** among its member regions
- Providing an open and flexible forum for debates, **exchange of knowledge and practices**
- Promoting **joint projects**
- Contributing to EU policy-making and facilitating the dialogue with the European Union Institutions and other stakeholders in Lifelong Learning



# What benefits of international cooperation at the regional level?

---



Mutual Trust



Inclusion and Outreach



Stakeholder Ecosystems



Technical staff capacity-  
building



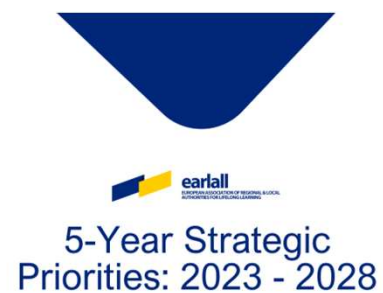
Institutional capacity-  
building



Set the example



# EARLALL Strategic Priorities 2023 - 2028



# Working Groups

- Thematic working groups deal with selected matters and produce specific results
- Lead by **representatives from member regions**



Mobility



Ageing Population & Lifelong Guidance



Youth Policies



Skills & Labour Market



**movetia**



Baden-Württemberg  
MINISTERIUM FÜR KULTUS, JUGEND UND SPORT



**BORÅS STAD**

REGIONE  
TOSCANA



**Generalitat  
de Catalunya**

#TogetherForLifeLongLearning



| [www.earlall.eu](http://www.earlall.eu)

## Capacity-Building in Lifelong Learning

- 9 Sessions of the EARLALL Academy held in 2023-2024
- 7 external speakers
- Part of the **European Year of Skills**





# Gender Equality Task Force

For equality in lifelong learning

- Launched in January 2023 by **EARLALL, EAEA and EfVET**
- 4 thematic webinars
- 1 European Week of Regions and Cities Session and event report
- 4 Social media campaigns with **#GenderEqualityTaskforce**
- Exchange underway between Centre Val de Loire, Flanders, Catalonia and Borås



HOME ABOUT US MEMBERS ACTIVITIES CONTACT

## GENDER EQUALITY TASK FORCE



### Gender Equality Task Force for Lifelong Learning

The European Association for Regional and Local Authorities for Lifelong Learning (EARLALL), the European Forum for Vocational Education and Training (EfVET) and the European Association for the Education of Adults (EAEA) are jointly setting up a dynamic Task Force that aims to support gender-balanced participation in lifelong learning and to ensure equal access and rights for everyone. The President of the European Commission, Ms Ursula von der Leyen, has made gender equality a priority of her mandate since her appointment speech, in July 2019, entitled 'A Europe that strives for more'. In line with this priority, this Task Force advocates for equal and balanced lifelong learning educational opportunities for all – not only to help ensure successful integration into the labour market, but also to challenge the existing gender stereotypes – which can only be achieved through the incorporation of a gender perspective into all EU policies.

An initiative promoted by



### Why a Task Force?

Acknowledging that adult participation in training is essential to improve overall employability and to address the skills gap in the European labour market, the European Pillar of Social Rights Action Plan (EPSR) has indicated that 60% of adults should participate in training every year by 2030. While the EPSR indicates a universal goal to achieve, the upskilling of EU citizens requires a gender-sensitive approach in line with the current inequalities in employment, training and education.

As it stands:

- There is an inequality in the EU in the number of working citizens, with the rate of working men in 2019 (79.0%) being 11.7% higher than that of women (67.3%)<sup>[1]</sup>
- There is a gender inequality in enrolments in general education programmes, with female upper secondary students more likely to enrol than men<sup>[2]</sup>
- There is an inequality in the share of early leavers from education and training in the EU, with dropout rates higher among young men (11.4%) than

#TogetherForLifeLongLearning



| [www.earlall.eu](http://www.earlall.eu)

# Collaboration in European Platforms



Community Co-Lead on the role of regions and cities in Apprenticeships



Associate Member



Member of the Innovation and Research Group



#TogetherForLifeLongLearning



| [www.earall.eu](http://www.earall.eu)

# Regional Pact for Skills in Lifelong Learning Mobility



# European Year of Skills



#TogetherForLifeLongLearning



| [www.earlall.eu](http://www.earlall.eu)



# Our projects 2024

---



Interreg  
Europe



Co-funded by  
the European Union

SKYLA



Interreg  
Europe



Co-funded by  
the European Union

SALAM



#TogetherForLifeLongLearning



| [www.earlall.eu](http://www.earlall.eu)





Learner Centric Advanced Manufacturing Platform



Co-funded by  
the European Union



earlall  
EUROPEAN ASSOCIATION OF REGIONAL & LOCAL  
AUTHORITIES FOR LIFELONG LEARNING

→ CoVE coordinated by  
TKNIKA (Basque  
Country) - **Learner-  
Centric Advanced  
Manufacturing  
Platform**



- Create a trends Observatory for AM
- Develop mechanisms for skills definition, learning paths, micro-credentials...
- Set up an Open Innovation Community
- Run a Collaborative Learning Factory
- Promote Synergies with other EU initiatives
- Boost the platform in Europe and beyond



#TogetherForLifeLongLearning



| [www.earlall.eu](http://www.earlall.eu)

Find out more at [lcamp.eu](https://lcamp.eu)

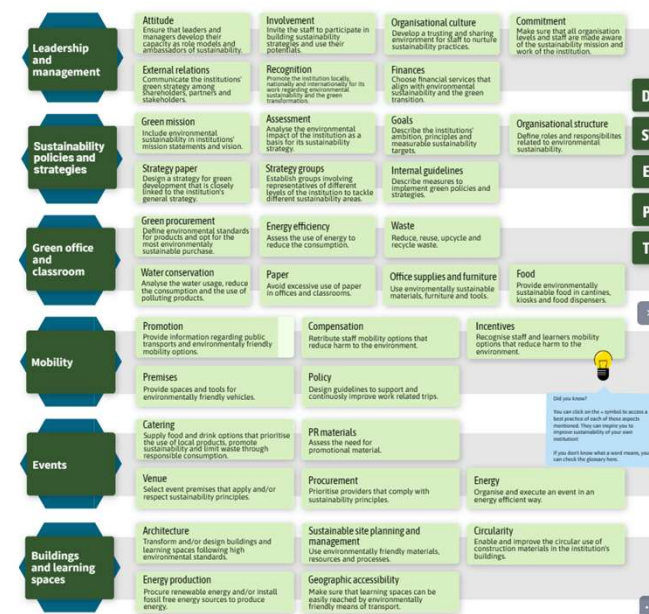




Co-funded by  
the European Union



→ Development of a **sustainability matrix, self-assessment tool**, accompanying webinars and PDF tool (available in EN, DE, SW, ES, PL, TR)



#TogetherForLifeLongLearning



| www.earlall.eu






Co-funded by  
the European Union



Find out more at [smalei-project.eu](https://smalei-project.eu) or on the LinkedIn group “Green Adult Learning Community”

## JOIN OUR COMMUNITY!

ARE YOU GREEN-MINDED AND WORK WITH ADULT EDUCATION? ARE YOU INTERESTED IN SUSTAINABILITY AND LEARNING INSTITUTIONS?



LINKEDIN/AA


WHY THE GREEN ADULT LEARNING  
LINKEDIN COMMUNITY?

**NETWORK**

**LEARN**

**GIVE FEEDBACK**

on the ALE sustainability self-  
assessment tool developed by:



Co-funded by the  
Erasmus+ Programme  
of the European Union



#TogetherForLifeLongLearning



| [www.earlall.eu](https://www.earlall.eu)



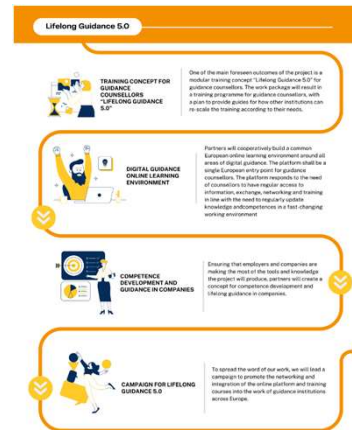
Co-funded by  
the European Union



UPSCALING GUIDANCE SERVICES IN EUROPE



The project aims to **support the transformation of guidance institutions** and the work of guidance counsellors in the face of **megatrends in our society**, such as the digital and green transitions.



## Lifelong Guidance 5.0

Upscaling Guidance Services in Europe fit for the future of work



Co-funded by  
the European Union

UPSCALING GUIDANCE SERVICES IN EUROPE



#TogetherForLifeLongLearning



| [www.earlall.eu](http://www.earlall.eu)





UPSCALING GUIDANCE SERVICES IN EUROPE



Co-funded by  
the European Union



# What will we create in Lifelong Guidance 5.0?

Let's start!



Watch the video on  
EARLALL's YouTube Channel:



#TogetherForLifeLongLearning



| [www.earlall.eu](http://www.earlall.eu)



Enabling Data Analytics for Actions  
Tackling Skills Shortages & Mismatch



Co-funded by  
the European Union



→ **TRAILS is a Horizon Europe project** that seeks to build on current data in skills mismatches and create novel tools and databases for measuring and classifying skills mismatches, using cutting-edge technologies like machine learning and AI.

→ **Trails-project.eu**

#### Novel tools and databases

for measuring and classifying skills mismatches, gaps and shortages, using cutting-edge technologies like Machine Learning and Artificial Intelligence.

#### AI real time skill profiling and matching

for reducing skill gaps



#### VET and Adult Learning training

match employees with educational opportunities involving VET and AL authorities

#### Policy implications

contribute to the European Skills Agenda, by laying the groundwork for inclusive and resilient European labour markets

#TogetherForLifeLongLearning



| [www.earlall.eu](http://www.earlall.eu)

## SKYLA

- Interreg Europe programme running 2023 - 2027
- The SKYLA project seeks to **support public authorities in putting future skills at the centre of the twin transitions** for a smarter, more resilient development, by boosting and adapting the role of VET in innovation ecosystems and smart specialisation strategies.



## SKYLA

Find out more at [interreg.eu/skyla](https://interreg.eu/skyla)

**SKYLA GOES ONE STEP AHEAD THANKS TO INTERREG TRAINING DAYS**

On 26-28 September 2023, SKYLA - Smart Specialisation Skills Ecosystems for the Twin Transition-partners participated in the Interreg Europe Programme training days in Lille (France).

29 September 2023 | By Project SKYLA

**SKYLA presented to European project partners in Tuscany**

The SKYLA project was presented in Tuscany to the consortium of a European project seeking to identify local skills ecosystems

26 September 2023 | By Project SKYLA

**First Stakeholders Meeting held in Athens**

Greek partners in the SKYLA project held their first stakeholder meeting in Athens

04 September 2023 | By Project SKYLA

**First Stakeholder Group meeting in Sofia**

On July 4 2023, the Sofia Municipality and the Cluster of Mechatronics and Automation marked the start in the Sofia's quest to enhance the "Strategy for Young People 2017-2027" with the first regional stakeholders' event.

04 July 2023 | By Project SKYLA

**First workshop of the Podlaskie Stakeholder Group**

SKYLA project partner outlines their experience with hosting their first regional stakeholder group.

**SKYLA Kicks Off in Brussels**

SKYLA was kicked off in Brussels with a seminar on skills for the twin transition and the first policy needs comparison amongst partners.

Interreg Europe Co-funded by the European Union

## SKYLA

### Smart Specialisation Skills Ecosystems for the Twin Transition

Lorenzo Sabatini  
Project Coordinator  
[l.sabatini@asev.it](mailto:l.sabatini@asev.it)

12<sup>th</sup> June 2024 | Webinar on upskilling

SLIDE 1

## SALAM

- Interreg Europe running from March 2024 – March 2028
- Lead partner: University of Florence, in cooperation with 6 regions.
- SALAM aims to support public authorities in **fast-tracking the sustainable inclusion of migrants** into local labour markets, harnessing their competences, capacities and ambitions, through developing targeted education, guidance and learning opportunities.
- The project kicked off in January 2024
- [Video available here](#)





## CONTACT US:



earlall@earlall.eu



earlall.eu



@EARLALLEU



EARLALL - European Association of Regional and  
Local Authorities for Lifelong Learning



Rue des Deux Églises 27, 1000, Brussels

