

TOGETHER FOR LIFELONG LEARNING

EARLALL is the European Association of Regional and Local Authorities for Lifelong Learning. It is an international non-profit association network of governments and local authorities willing to build concrete cooperation in the field of lifelong learning. The network was established in 2001 and its secretariat is based in Brussels, Belgium.

Lifelong learning addresses: Vocational Educational Training (VET/HVET) Adult Learning and Education (ALE) Inclusive lifelong learning, upskilling and reskilling of adults and guidance policies and youth projects.

Our mission

The association aims at facilitating **collaboration among its member regions**, as well as providing an open and flexible forum for debates, exchange of knowledge and practices, promoting joint projects, contributing to EU policymaking and facilitating the dialogue with the European Union Institutions, international and civil society organisations in the field of Lifelong Learning.

Our strategic priorities for 2023 – 2028

Our strategic priorities outline our four axes of action for the current period (skills for the future; resilient societies; international mobility and outreach and forefront of EU policy) and can be found along with the annual work plans on the website under [“Reports”](#).



What are the benefits of cooperating in EARLALL?



Mutual Trust



Inclusion and Outreach



Stakeholder Ecosystems



Technical staff capacity-
building



Institutional capacity-
building



Set the example

Our network is **flexible** and tailored to address the **capacity-building** needs of our members. The benefits of joining the network include:

- Become part of a network of mutual trust, with privileged avenues for international exchange (through our mobility matchmaking tool) and cooperation on European projects.
- Improve the capacity of technical staff working in regional and local authorities on the internationalisation of lifelong learning
- Meet new stakeholders and expand your outreach through regular invitations to participate and present in events
- Keep up-to-date with EU news and opportunities related to lifelong learning
- Set the example for other regional and local authorities – our strength is in our members.

EARLALL is a dynamic network and we adapt to our members' interests. Find out about our actions below.

Our actions

Our actions are laid out each year in the annual action plan. Activities focus on **capacity-building** for our members and exploring new initiatives together.

Working Groups

Find out about the initiatives of the four thematic Working Groups under “[Working Groups](#)” on the EARLALL website. They include Lifelong Guidance & Ageing Societies; Skills and the Labour Market; Mobility and Youth Policies. Working Groups meet 3+ times a year.

EARLALL Academy

The EARLALL Academy was set up in January 2023, as a response to members' desires to learn about specific topics. The webinars take place every 1-2 months and are exclusive for EARLALL members.

Gender Equality Task Force for Lifelong Learning

EARLALL is a co-founder of the [Gender Equality Task Force for Lifelong Learning](#). The task force organises webinars, debates, peer-learning opportunities and exploratory sessions on issues relating to gender equality in education and employment.

EU-funded projects

EARLALL plays a strong dissemination and communication role in many EU projects (Interreg Europe, Erasmus+ and Horizon Europe), and we develop common EU projects with our members in the working groups and bilaterally. [Discover our current projects.](#)

Involvement in EU-level initiatives

EARLALL prides itself on staying up to date with EU initiatives affecting lifelong learning and is involved in numerous EU-level initiatives and working groups.

Pact For Skills

EARLALL is a member of the Pact for Skills initiative. Since April 2024, we are building a **regional pact for lifelong learning mobility**.



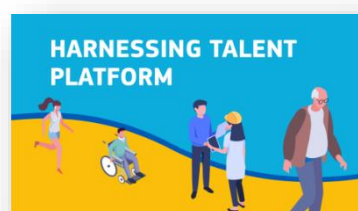
European Alliance for Apprenticeships

EARLALL is a member of the European Alliance for Apprenticeships and also a **co-lead of the Community of Practice on the Role of Regions and Cities in Apprenticeships**.



Harnessing Talents Platform

EARLALL is a member of the Harnessing Talents Platform Working Group on Research and Innovation.



How to join us & organisation

If you want to become a member of EARLALL, please contact earlall@earlall.eu and be sure to read and agree with our [Statutes and Regulations \(EN\)](#). An Application Form should be completed and signed by your political representative, and then be sent to the EARLALL Secretariat together with a declaration on the competence of your Regional/Local Government in the field of education and/or lifelong learning, related to the objectives of the EARLALL – please see art. 4.1 of the statutes for the EARLALL objectives. Please note that only European regional and local authorities with competence in lifelong learning can become full members, while other organisations have the possibility to become Associate Members of the network.

Frequently Asked Questions

What is a local and regional authority? If I am not one, can I still join the network?

As per Article 5 of the EARLALL statutes, full members are regional and local authorities at the second level of elected government of countries in Europe, with lifelong learning responsibilities. Any other regional and local authority and/or legally constituted organisations active in the field of lifelong learning can be proposed and approved as associate member.

How much time commitment do members have to put in?

The goal of the network is to be an asset to your daily work. With this in mind, the Working Groups are optional and meet 3-4 times a year. Members and Associate members are invited to the General Assembly once a year, and the level of involvement through projects and initiatives can be discussed bilaterally.

What are the membership fees?

Full members pay a membership fee that is composed of two elements: A basic yearly contribution of EUR 2500 EUR + an additional amount of which the maximum will be fixed by the General Assembly upon proposal from the Board of Directors, based on the number of inhabitants and on the Gross National Product of the area. The total sum is limited at 8000 euros a year. Associate members pay a yearly membership fee of 1000 EUR. See further details in Article 7 of the EARLALL statutes.

Contact us:



earlall@earlall.eu



earlall.eu or:



@EARLALLEU