



Interreg
Europe



Co-funded by
the European Union

SKYLA

BRUSSELS SKYLA KICK OFF

Timetable: 9.30 CET – 17 CET, 16 MAY 2023 and 9-12.30 CET 17 MAY 2023

Hosted by:



Regione Toscana

at the Regional Government of Tuscany Brussels Office, [Rond Point Schuman 14, 1000 Brussels](#) and Online

The SKYLA - Smart Specialisation Skills Ecosystems for the Twin Transition kicks off in Brussels on May 16 – 17 2023. SKYLA's overall objective is to support public authorities in **putting future skills at the centre of the twin transitions** for a smarter, more resilient development, by boosting and adapting the role of VET in innovation ecosystems and smart specialisation strategies.

Lead Partner for SKYLA: Agency for the development of the Empolese Valdelsa

Consortium:

- Podlaskie Voivodeship
- Regional Council of Skåne, Department for Regional Development
- Industrial Development Center South, Sweden
- Sofia Municipality
- Cluster of Mechatronics and Automation, Bulgaria
- Fingal County Council
- Regional Development Fund of Attica
- European Association of Regional and Local Authorities for Lifelong Learning
- European Social Fund Agency, Lithuania
- Pôle emploi Provence-Alpes-Côte d'Azur
- Regional Government of Tuscany - Directorate for Education, Training, Research and Employment
- Ministry of Education, Science and Sport, Lithuania



**Interreg
Europe**



**Co-funded by
the European Union**

SKYLA

Agenda Day 1 – 16 May 2023

Timetable: 9.30 CET – 17 CET, 16 MAY 2023

Location: Regional Government of Tuscany Brussels Office, [Rond Point Schuman 14, 1000 Brussels](#) (and online for the seminar only)

9.30 - 10	Arrival, registration and welcome coffee
10 -12.30	Skills for the Twin Transition Open Hybrid Seminar
10- 10.05	Welcome by the Tuscany Region
10.05-10.15	Opening and introduction to the SKYLA project, Agency for the development of the Empolese Valdelsa
10.15 – 10.45	Discussion: The European Skills Agenda - State of Play and Looking Forward <i>Felix Rohn, Policy Officer Adult Skills DG EMPL</i>
10.45 – 11.45	Discussion: Innovation in VET in the context of regional smart specialization strategies <i>10-15 presentations plus questions from speakers on:</i> <ul style="list-style-type: none">• Sustainability and Innovation – Guia Bianchi, Economic and Policy Analyst, Innovation Policies and Impact, Joint Research Centre• The possibilities of ESF+ in the twin transition, Andreas Larsson Regional director Southern Sweden, The Swedish ESF CouncilSmart Specialisation,• DG REGIO, tbc• VET in the Green Transition – Karen Maguire, Head of Division: Local Employment, Skills and Social Innovation at OECD-OCDE
11.45 - 12	Questions and Answer Session
12 – 12.30	Lifelong learning as a key element to coping with the skills transition: Lessons from the EARLALL Network
12.30 – 14	<i>Lunch on-site</i>
14 – 16.30	Workshop on Policy Needs - Challenges to Creating Skills for the Twin Transition To set up the analysis on Policy Needs, SKYLA partners discuss interactively the current situation of their territorial policy environment to support skills for the twin transition.

The workshop is organised in 2 sessions with working groups. Each working group will be moderated by Resolvo and volunteering partners.

1. Divided in 4 heterogeneous groups by geographical area, partners describe their regional current situation, building on the SWOT analysis initiated in the Methodology Document (Chapter 1.1).

2. Divided in 4 homogeneous groups by geographical area, partners discuss and priorities sub-themes at territorial level, building on the analysis on sub-topics initiated in the Methodology Document (Chapter 1.2).

16.30 - 17

Round up and conclusions

Results emerged from the group work are shared in plenary session highlighting commonalities and differences.

19.00

[Ego Ristorante](#), Bd Charlemagne n°21, 1000 Bruxelles



**Interreg
Europe**



**Co-funded by
the European Union**

SKYLA

Agenda Day 2 – 17 May

Timetable: 9.00 CET – 12.30 CET, 17 MAY 2023

Location: Regional Government of Tuscany Brussels Office, [Rond Point Schuman 14, 1000 Brussels](#)

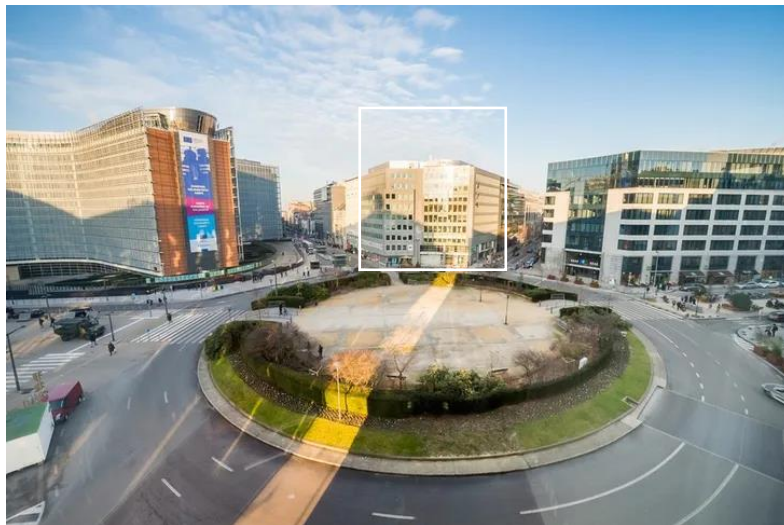
- 9 – 9.30 **Presentation on innovative VET practices during the twin transition in Flanders**
GO! Onderwijs van de Vlaamse Gemeenschap
- 9.30 - 10 **Presentation on Regional ecosystems for skills and Adult Education in Wallonie-Bruxelles**
Michèle Mombeek, Ministry of the Wallonia-Brussels Federation, Directorate General for Higher Education, Lifelong Learning and Scientific Research, General Service for Higher Education and Scientific Research
- 10 – 10.30 **Presentation from partner regions on their best practices in the context of the SKYLA project**
 - Fingal County Skills Strategy
 - Pôle Emploi PACA *Expertise d'avenir*
- 10.30 -11 **Coffee Break**
- 11-12.30 **SKYLA Steering Committee Meeting 01**
Draft Agenda:
 - Overview of Steering Committee role / regulations
 - Internal communication: recurring on-line meetings
 - Updates on financial / technical reporting & other management issues
 - Next steps for SKYLA project / dates for next meetings
 - Any necessary votes / approvals
 - AOB
- 12.30 **End of meeting**

Practical information

Both days of the SKYLA kick off are hosted in the Regional Government of Tuscany Brussels Office, Rond Point Schuman 14, 1000 Brussels. This is located on the Schuman roundabout, with the nearest metro station being Schuman.

Schuman station is easily accessible from the airport:

1. Via Direct Train: 19 minutes to Schuman train station (tickets from [SNCB](#))
2. Via train and metro: 15 minutes to Brussels Central and then line 1 or 5 metro to Schuman (train via SNCB, metro via contactless card payment)
3. Via train and walking: 15 minutes to Brussels Central and then a 20-minute walk.



Above is the building where the Tuscany Offices are hosted. Upon entry to the building, you will be required to sign your name and email.