



FUTURE OF GUIDANCE — TRENDS IN A CHANGING WORLD

Dr. Elke Scheffelt,
Wegweiser Bildung Freiburg
30.06.2022, ERASMUS+ „Regale“

WHO WE ARE

Guidance and counselling center for educational and vocational questions

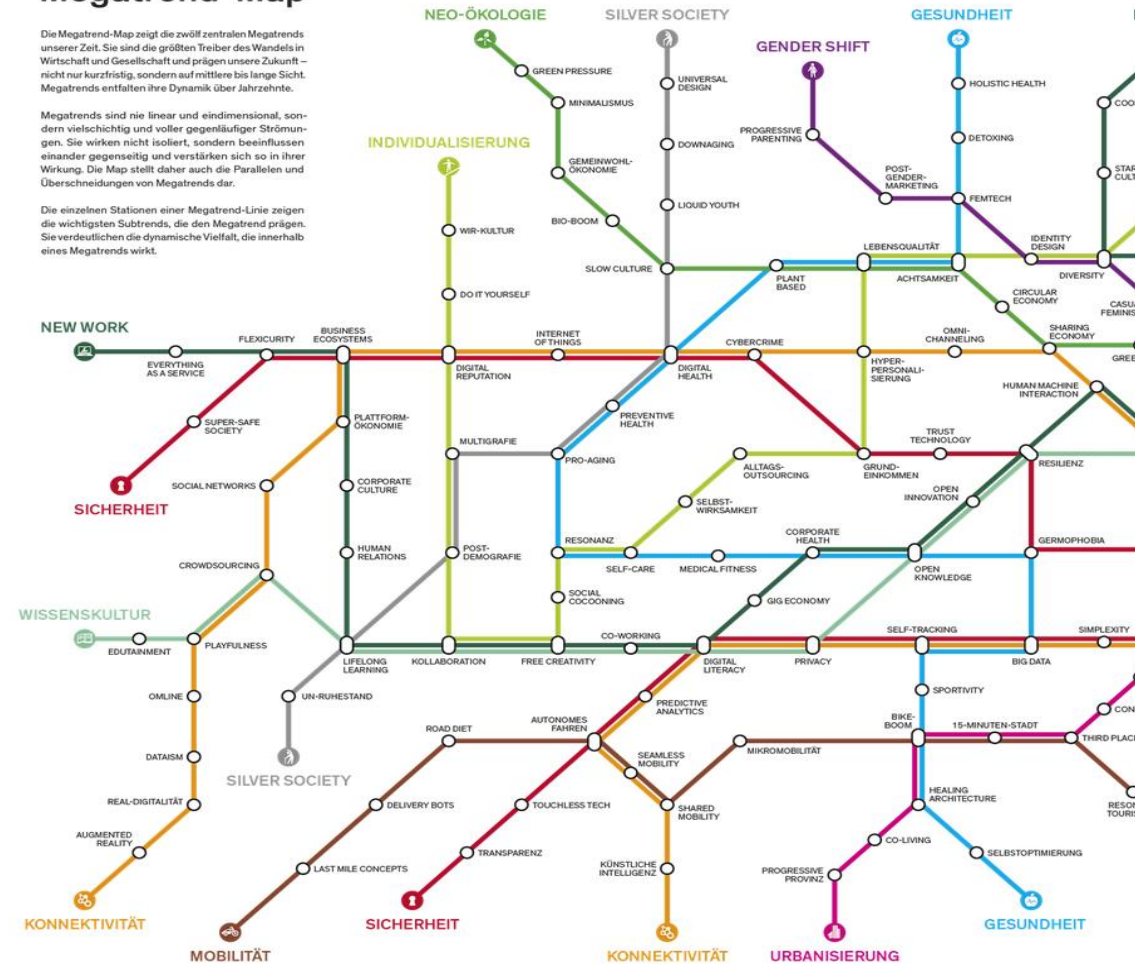
- for everyone from 0-99
- neutral and anonymous
- without the need make an appointment
- personally, per telephone, Mail, Chat and Videochat
- many events on frequent questions with our counselling partners in the city (university, labour market agency, social counselling centers etc.)
 - *Study without a highschool diploma?*
 - *Finance your studies and training!*
 - *School is over! And now?*



FREQUENT QUESTIONS

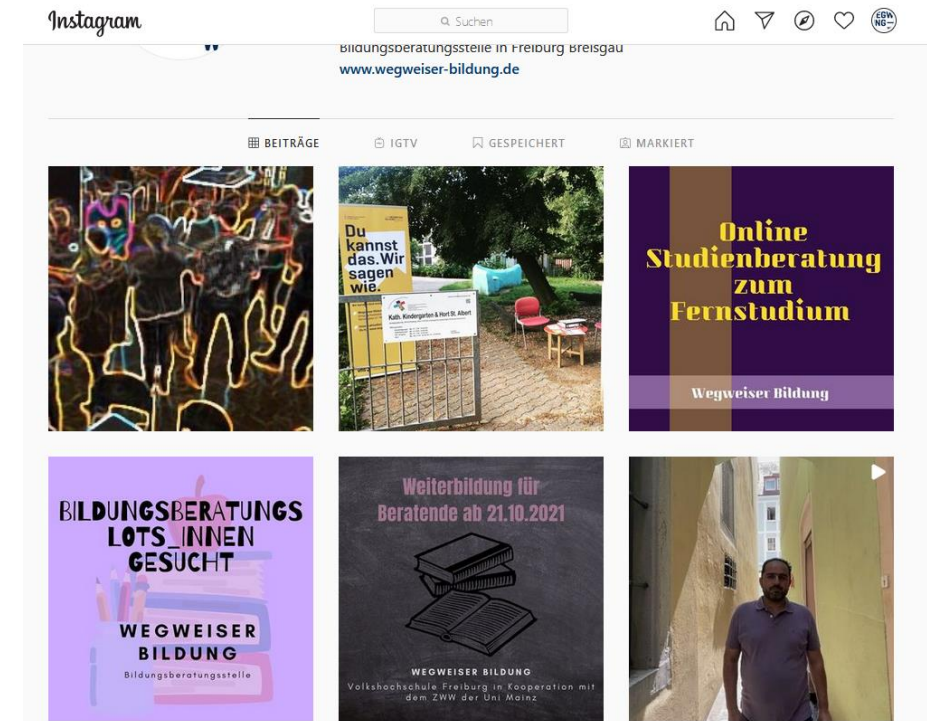
- I'm looking for a special kindergarden for my children?
- My son has a dyslexia und dyscalculia. Who can help?
- I need an overview over secondary schools!
- I'd like to do a technical apprenticeship. What kind of professions are there?
- I'd like to study and work at the same time. Does this work out and how?
- How can I finance my advanced training?
- I'd like to work voluntary when I'm retired. What are the options?
- ...





DIGITALISATION

- disruption and change (future literacy)
- on professions and career path (virtual or augmented reality/
- on guidance and counselling (e-counselling/AI/ gamification)
- on qualifications and competencies of counsellors
- on digital literacy
- on organisational contexts of counselling institutions
- on transparency and visibility in social media
- continuing education takes key role to cope with challenges



DIVERSITY

- different languages
- diverse backgrounds (cultural/educational.
- limited language abilities
- limiting social structures
- lack of time (shift work/care duties)
-



EVER CHANGING WORLD

- migration and integration
- globalisation
- climate change
- urbanisation
- demographie
- work life balance



POSSIBILITIES AND OPTIONS

- enabling networks
- offering open counselling settings – mobile counselling offer
- changing places and settings
- group settings
- pilots and peers
- peer counselling
- tolerance of ambiguity



**WEGWEISER
BILDUNG**
Wir. Wissen. Weiter.

Beratung gefunden. Schulabschluss
nachgeholt. Ausbildung gestartet.

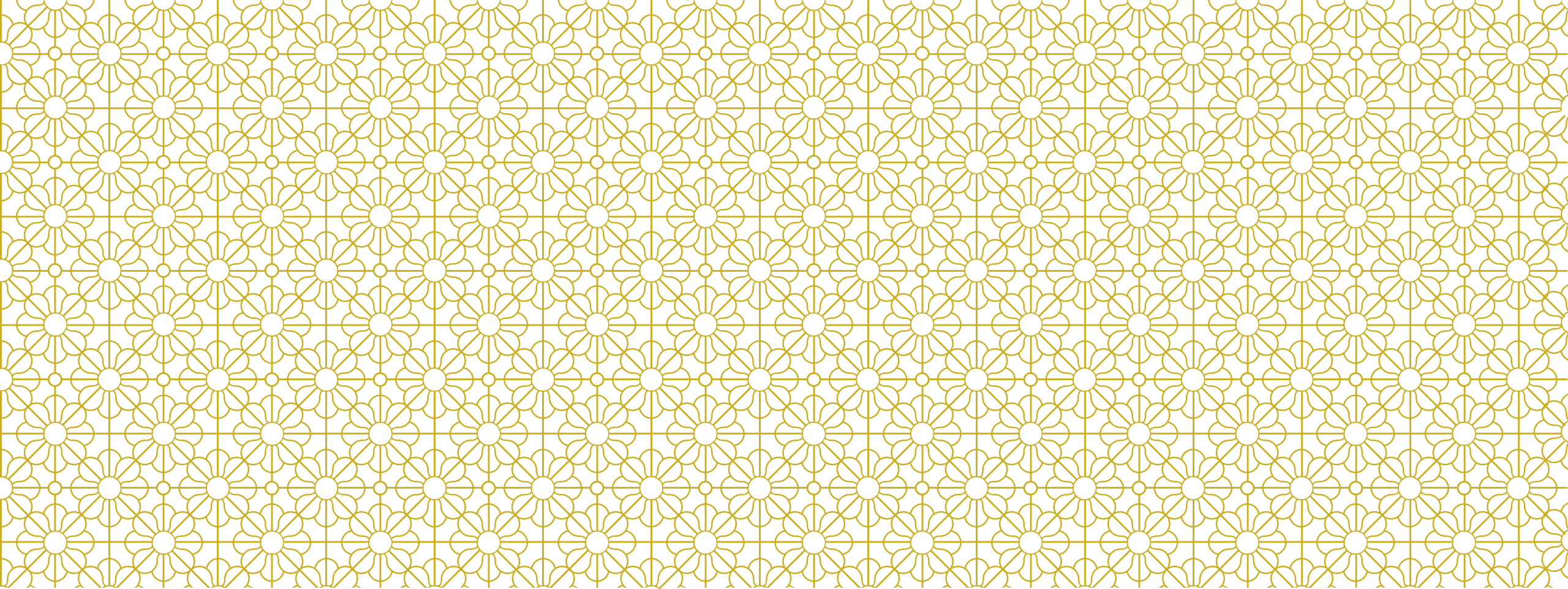
**Ich wusste nichts
von meinen
Chancen. Jetzt
nutze ich sie.**

Freiburger Beratungsstelle
für Bildungswege

vhs Volkshochschule
Freiburg

Freiburg
am Breisgau

Wegweiser Bildung // Münsterplatz 17 // 0761 201 2020 // www.wegweiser-bildung.de



THANKS FOR LISTENING!

WWW.WEGWEISER-BILDUNG.DE

**— WEGWEISER
BILDUNG —**
Wir. Wissen. Weiter.