

Welsh Government

Youth Engagement and Progression in Wales

Steven Fletcher
Department for Education and Skills
Welsh Government
22/02/13



Llywodraeth Cymru
Welsh Government

www.cymru.gov.uk



*This project has been funded with support from the European Commission.
This publication [communication] reflects the views only of the author, and the Commission cannot be held responsible for any use which may be made of the information contained therein.*
Agreement number (1 906 92-LLP-1-2010-1-IT-KA1-KA1ECETB).



Policy evolution

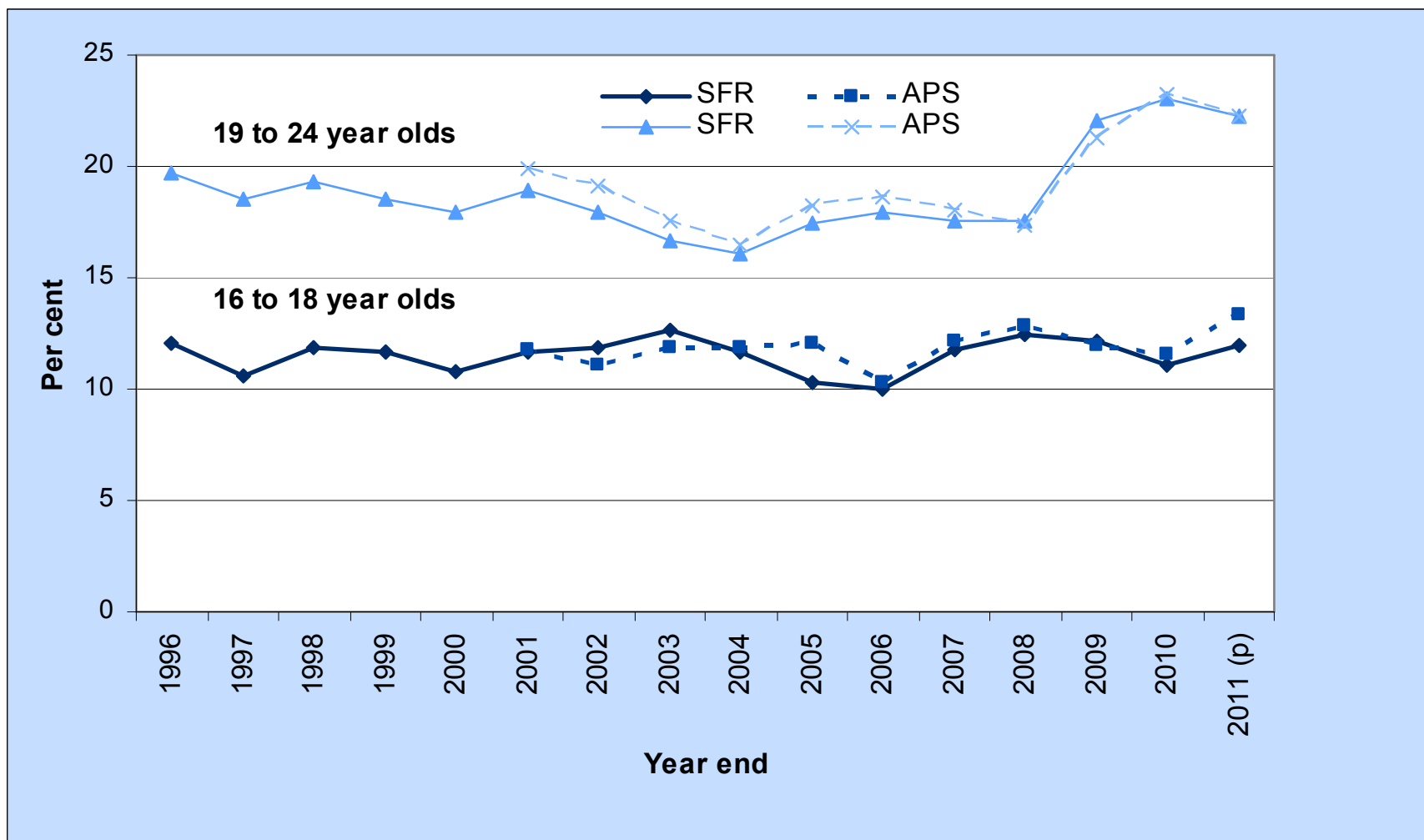
- Welsh Government published a Youth Engagement and Employment Action plan in January 2011
- The commitment to reducing the number of young people who are not in education, employment or training (NEET) reaffirmed in the Welsh Government's Programme for Government
- Reviews and identification of best practice
- Plans to implement a new approach to youth engagement and progression in Wales announced January 2013
- Statement by the Minister March 2013

Trends in the number who are NEET

- High compared with other UK countries (although youth unemployment is not as severe as some EU regions)
- The proportion of 16-18 year olds who are NEET has remained fairly constant at 10-12 per cent (1996 to 2010)
- Positive destinations of young people at 16 have increased 2.5% in the last 5 years but progress is not sustained through to 18⁽¹⁾
- Recession is less of a causal factor for 16-18 year olds, suggesting a more stubborn structural problem
- For 19-24 year olds, the NEET rate ranged between 16-20 per cent (1996 to 2008). The rate reached 23 per cent in 2010.
- Increased numbers 19-24 have been cyclical, generated by the recession. Sustainable jobs are needed for young people to progress to.

(1) Careers Wales data

Percentage of **16 – 18** and **19 – 24 year olds** not in education, employment or training (NEET)



(p) SFR: year end 2011 is provisional

Source: WG Statistical Release SDR 111/2012 Participation of young people in education and the labour market, Labour Force Survey, Annual Local Labour Force Survey, Annual Population Survey

The "SFR" measure is used to monitor Welsh Government Programme for Government commitments. The Annual Population Survey (APS) is published on a rolling year basis every quarter and are less robust as they are based on small sample sizes.

Impact estimates (1)

- The additional cost associated with being NEET are £160,600 per person over a lifetime (costs to individuals, their families and to the rest of society)
- The value of the additional costs of unemployment; under-employment; crime; poor wellbeing; substance misuse; premature death; early motherhood; loss of skills to the economy
- Extrapolated to Wales, the costs of failing to help 13,600 NEET young people aged 16-18 out of NEET status over their lifetime would amount to well over £1 billion.

(1) Estimates based on study by the University of York for the Audit Commission (2010)



Approaches

More than one way that Government seeks to address these fundamental challenges:

- Drive up attainment in schools
- Tackle child poverty
- Strategic planning of services for children and young people
- Improve system consistency
- Ensure best practice
- Support the local focus
- Joined up service pre- and post-18
- Effective working between devolved and non-devolved functions



Youth Engagement and Employment Action Plan 2011-15

- Launched 2011
- Aim is to enable young people to progress to sustainable employment and to reduce the number of young people who are not in education, employment or training in Wales
- Eighteen cross Government actions



18 Actions (1)

- Ensure initiatives enhance UK Government welfare reforms
- 'Pathway to Work' for 16-17 year olds
- Review existing funding and provision for young people who are NEET
- Extend the opportunities available for young people to enter apprenticeship programmes
- Social clauses in public sector procurement contracts to create youth employment, work experience and training opportunities
- Increase opportunities for work experience
- Establish a new team with overarching responsibility for youth engagement and employment
- Set the overall approach to youth engagement and employment
- Ensure Children and Young People's Partnerships are working effectively



18 Actions (2)

- Consider the role of the Youth Service in Wales
- Develop an integrated approach to assisting families whose children may be at risk of becoming NEET
- Ensure Teachers' awareness of dealing effectively with pupils at risk of becoming NEET
- Strengthen planning and provision for young people
- Further develop the basic skills of young people and adults
- Pilot an extension to 14-19 learning coach provision
- Stimulate interest and participation in entrepreneurship
- Use 'dormant accounts' to support young people who are NEET
- Strengthen data management, statistical information, and sharing of information on young people who are NEET

Review (1)

- Improving the numbers of young people who stay engaged in some form of meaningful education and training after compulsory education and who progress to sustained employment
- Evidence that identification of those at risk of disengaging from education and training must start at an early age
- Accuracy of predicting future disengagement through the use of key indicators
- Failure to attain at certain levels by certain ages significantly increases chances of dropping out of the education and training system or failing to secure employment ⁽¹⁾
- Need to think differently about how to tackle different age groups

(1) When considered alongside other indicators such as Special Educational Needs or a young person's behaviour and attendance at school



Review (2)

- On-going economic challenges
- Much work by both Welsh Government and the 22 Local Authorities in Wales
- Considerable variation in the success of reducing the numbers of disengaged young people across Local Authority areas
- Notable improvements where NEET reduction is an area-wide priority and where focussed leadership has come from the Chief Executive and other senior staff
- Good practice identified by Local Authorities themselves



Towards a new approach

- Strengthening the approach to early identification and earlier intervention
- Personalised services in local areas built around the needs of individual young people from an early age
- Ensuring the Welsh language thrives, acknowledging the importance of considering linguistic needs
- Strengthening the accountability of different agencies
- Transition to a **Framework for Youth Engagement and Progression**



Towards a Framework for Youth Engagement and Progression

Six key building blocks:

- Identifying young people most at risk of disengagement
- Better brokerage and co-ordination of support
- Stronger tracking and transitions of young people through the system
- Ensuring provision meets the needs of young people
- Strengthening employability skills and opportunities for employment
- Greater accountability for Local Authorities

- 
- Further work to do to develop the Framework
 - Statement by the Minister in March 2013



Llywodraeth Cymru
Welsh Government

www.cymru.gov.uk

Thank you

Steven Fletcher
Department for Education and Skills
Welsh Government
22/02/13



*This project has been funded with support from the European Commission.
This publication [communication] reflects the views only of the author, and the Commission cannot be held responsible for any use which may be made of the information contained therein.*
Agreement number (190692-LLP-1-2010-1-IT-KA1-KA1ECETB).